

Introducing . . .



. . . Lollie's Cottage

- Are you planning a visit to Bellingham of a weekend or more?
- Do you wish you could experience one of Bellingham's unique neighborhoods?
- Would you like to stay in a comfortable home with more space and privacy than a hotel or motel?
- Do you long to enjoy a leisurely breakfast on your own deck, rather than looking for a restaurant early in the morning?

At Lollie's, you will come home to serenity, space, and privacy after a long-day of house-hunting, shopping, job interviewing, or sight-seeing with your family or friends.

It's all at your doorstep . . .

Take a leisurely walk to one of the neighborhood's many restaurants and coffee shops.

Or, venture further to Bellingham's beautiful waterfront or downtown.



Who is Lollie?

"Lollie" is the childhood nickname of the 92-year-old mother of the hostess of Lollie's Cottage, Marie Low.

Lollie grew up in a small town in Saskatchewan, Canada, and has always had a special fondness for cozy cottages.

Lollie's Cottage, built in 1949, is decorated in a style similar to what Lollie used to decorate her first home after her marriage in 1946.

In the hallway at Lollie's Cottage, you will find a photo gallery celebrating Lollie's long and interesting life.

FOR RESERVATIONS:

Lollie's Cottage

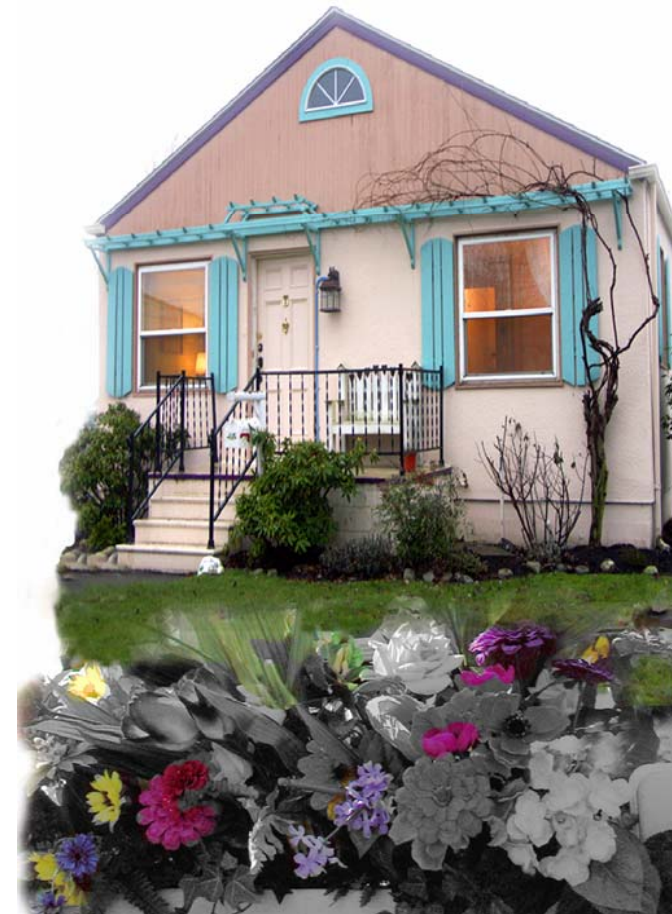
2401 Kulshan
Bellingham, WA 98225
Marie Low, Hostess
Phone: (360) 671-1910
Email: mlow526923a@aol.com

www.lolliescottage.com

***A short-stay home in the heart of
Bellingham's Fountain District
". . . much more than a B&B"***

Lollie's Cottage

Bellingham



Amenities

Lollie's has everything you need to enjoy a relaxing and stress-free stay.

You'll find:

- Dishes, flatware and cookware in the kitchen.
- Plenty of towels in the bathroom.
- Lots of comfy pillows and extra sheets and blankets.
- TV with basic cable.
- Books and magazines for a leisurely afternoon read.



Accommodations

- A fully restored 1949 kitchen outfitted with 21st century amenities: full size stove and refrigerator, microwave, and even a washer and dryer.
- Two bedrooms, one with a Queen bed and the second with a Twin. You'll love the headboards crafted from antique garden gates.
- Plenty of closet and dresser space.
- A roomy bathroom with whirlpool tub and hand-held shower.
- Gas fireplace with remote control.
- A spacious living room decorated in soothing blues and greens in a "1950s garden" theme, complete with authentic lamps from the '50s.
- A gorgeous outdoor deck overlooking a back yard with fruit trees and flowers.

Directions: Lollie's is located at 2401 Kulshan Street just off Meridian behind Wilson's Furniture. Take the Meridian Street Exit from I-5 and go south on Meridian (toward downtown Bellingham and away from Bellis Fair Mall). Go about 1.5 miles until you see Wilson's Furniture. Turn right onto Monroe Street. Go one block. Lollie's is at the corner of Monroe and Kulshan.



Perfect for house-hunters, visiting relatives, home renovators, job interviewees and transferees, shoppers from Canada, garden wedding receptions.